

# Fiber Compactor Type FKA/FKC

Separating and compacting units for textile-, paper- and plastic waste



## Functional Description

The particle-laden air stream enters at the top of the housing through the tangential inlet, flows through the perforated cone and is discharged through the outlet. The collected material and waste is deposited on the inside of the perforated cone. From there the material is continuously scraped off and compacted by a plug screw.

The pre-compacted material is pressed against a diaphragm at the bottom outlet opening. This continuous process compacts the material and pushes the diaphragm open. The material is discharged into a suitable container or bag. This continuous operation of the units prevents fluctuations in the extraction system.

## Fiber Compactor

The separating and compacting units of type FKA/FKC are perfectly suitable for paper residue, edge strips, foil shreds and different shredded plastics. The solid particles are extracted from the production process by suction, separated from the air stream and deposited in bags, containers or silos.

## Application in various industrial sectors

- Textile industry
- Non-woven industry
- Paper industry
- Tobacco industry
- Plastic waste industry

## Advantages

- Separator and compactor in one unit
- Continuous operation
- High material and air flow capacity
- Sturdy construction
- Pressure-free discharge
- No fluctuations in the extraction system
- Energy-efficient through optimum time-relay control

R&R BETH FILTRATION

P.O Box 43054 Atlanta, GA 30336 USA

Tel: +1 (251) 243-7039

Fax: +1 (251) 243-0004

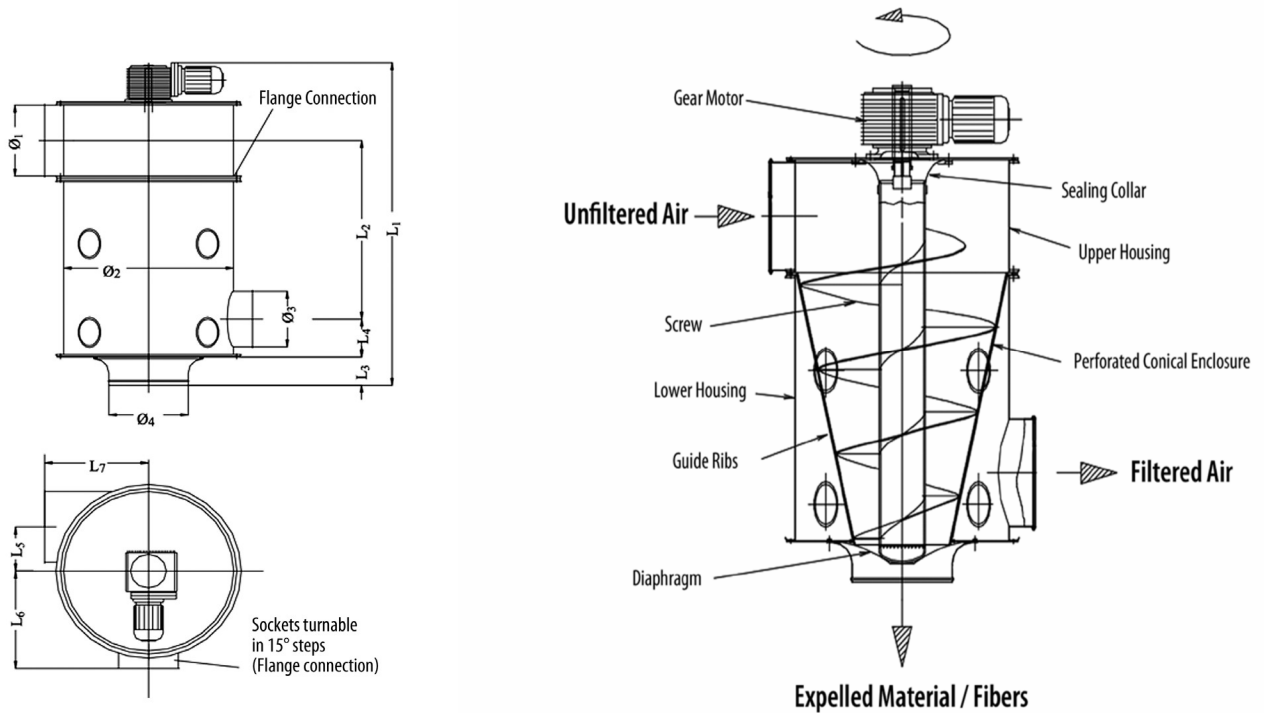
e-mail: [office@rr-bethfiltration.com](mailto:office@rr-bethfiltration.com)

# Fiber Compactor Type FKA/FKC

Separating and compacting units for textile-, paper- and plastic waste

Type	Max. Material Capacity kg/h (lb/h)	Max. Flow Rate V m <sup>3</sup> /h (cft./min)	Motor kW	Dimensions length x width x height mm (inch)
Fiber Compactor FKC	max. 200 (max. 440.9)	1,600 - 5,000 (941.7 – 2,942.9)	0.55	620 x 620 x 1,215 (24.4" x 24.4" x 47.8")
Fiber Compactor FKA	max. 500 (max. 1,102.3)	3,000 – 10,000 (1,765.7 – 5,885.8)	1.1	982 x 982 x 1,858 (38.7" x 38.7" x 73.2")

## Function Diagram



Technical Data	FKA	FKC
L1 [mm] (inch)	1,858	1,215
L2 [mm] (inch)	962	633
L3 [mm] (inch)	152	85
L4 [mm] (inch)	256	187
L5 [mm] (inch)	250	200
L6 [mm] (inch)	550	300
L7 [mm] (inch)	550	550
Ø 1 [mm] (inch)	400	280
Ø 2 [mm] (inch)	900	454
Ø 3 [mm] (inch)	400	280
Ø 4 [mm] (inch)	420	420
Weight [kg] (lb.)	355	140

R&R BETH FILTRATION

P.O Box 43054 Atlanta, GA 30336 USA

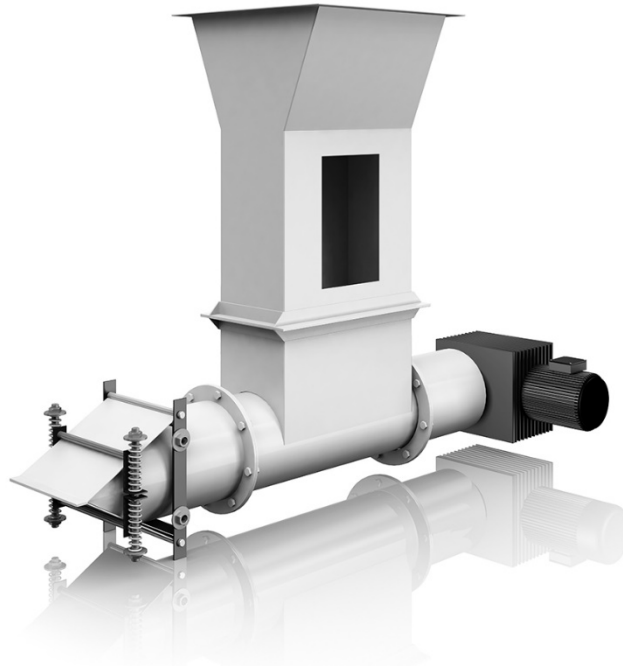
Tel: +1 (251) 243-7039

Fax: +1 (251) 243-0004

e-mail: office@rr-bethfiltration.com

# Compacting Power Screw

For compacting and discharging fine dust and short fibers



## Functional Description

The separated material is captured by a horizontal screw and discharged through the outlet to the front. Optionally the supply can be supported by a agitator which prevents solid bridges. Material compaction takes place, depending on the

chosen discharge unit, by means of spring leaf or flap with spring tension. The screw is driven by a special helical gear motor. Compaction takes place through the discharge material itself.

### Compacting Power Screw

The Compacting Power Screw is used as discharge unit for dust and fibers in combination with separators such as cyclones, dust separators, jet filters, hose filter systems and fine filter systems. It permits the removal of fine dust and material with short fibers without letting those substances contaminate the surrounding area.

### Application in various industrial sectors

- Bulk goods/powder technology
- Textile industry
- Chemical industry
- Non-woven-industry
- Wood industry
- Fibrous/insulate technical industry

### Advantages

- Large material flow capacity
- Robust industrial model
- Dust-free material discharge with compaction ratio of about 5:1
- Continuous operation
- No pressure fluxion in the system
- For adhesive dust with integrated stirring unit

R&R BETH FILTRATION

P.O Box 43054 Atlanta, GA 30336 USA

Tel: +1 (251) 243-7039

Fax: +1 (251) 243-0004

e-mail: [office@rr-bethfiltration.com](mailto:office@rr-bethfiltration.com)

# Compacting Power Screw

For compacting and discharging fine dust and short fibers

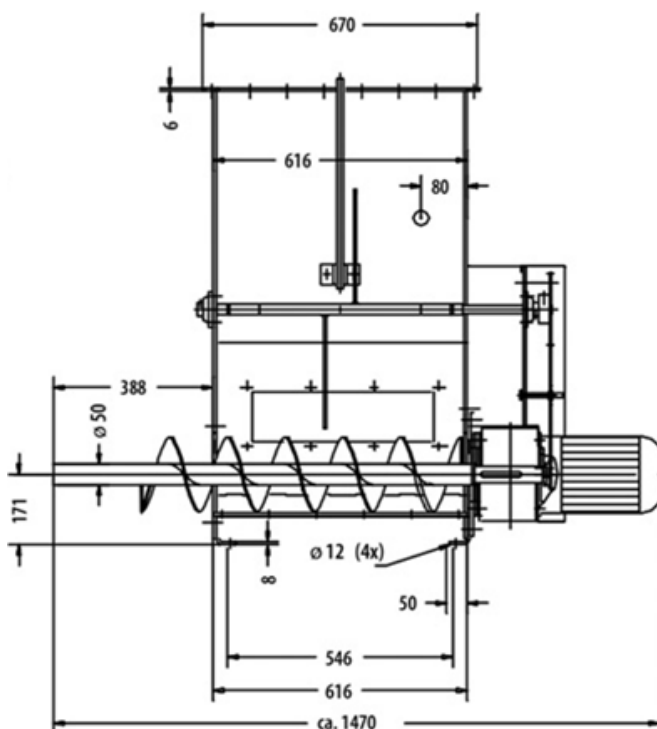
## Technical Data

	Type CPS 200	Type SKP 180
material flow capacity (depending on bulk density)	Max. 150 kg	Max. 100 kg
Power consumption	1,1 kW	0,55 kW
compacting rate	Max. 5:1	Max. 5:1
additionally agitator	Yes	No
discharge unit	Into bags Into container	Into container

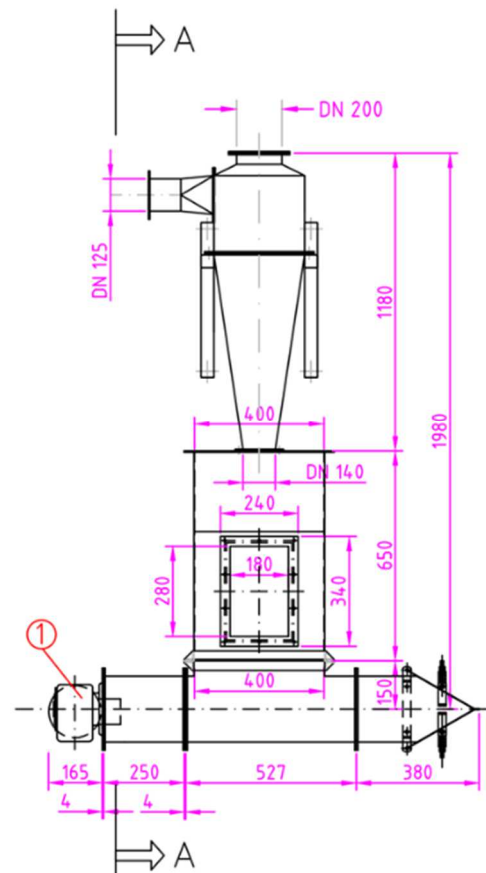
## Accessories

	Type CPS 200	Type SKP 180
Level sensor	Yes	optional
speed monitoring	optional	optional
wall mounting set	optional	optional
frame	optional	optional

## Main dimension CPS



## SKP with Cyclone



R&R BETH FILTRATION

P.O Box 43054 Atlanta, GA 30336 USA

Tel: +1 (251) 243-7039

Fax: +1 (251) 243-0004

e-mail: [office@rr-bethfiltration.com](mailto:office@rr-bethfiltration.com)